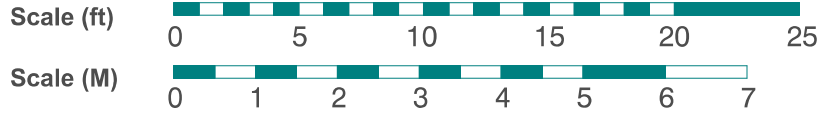
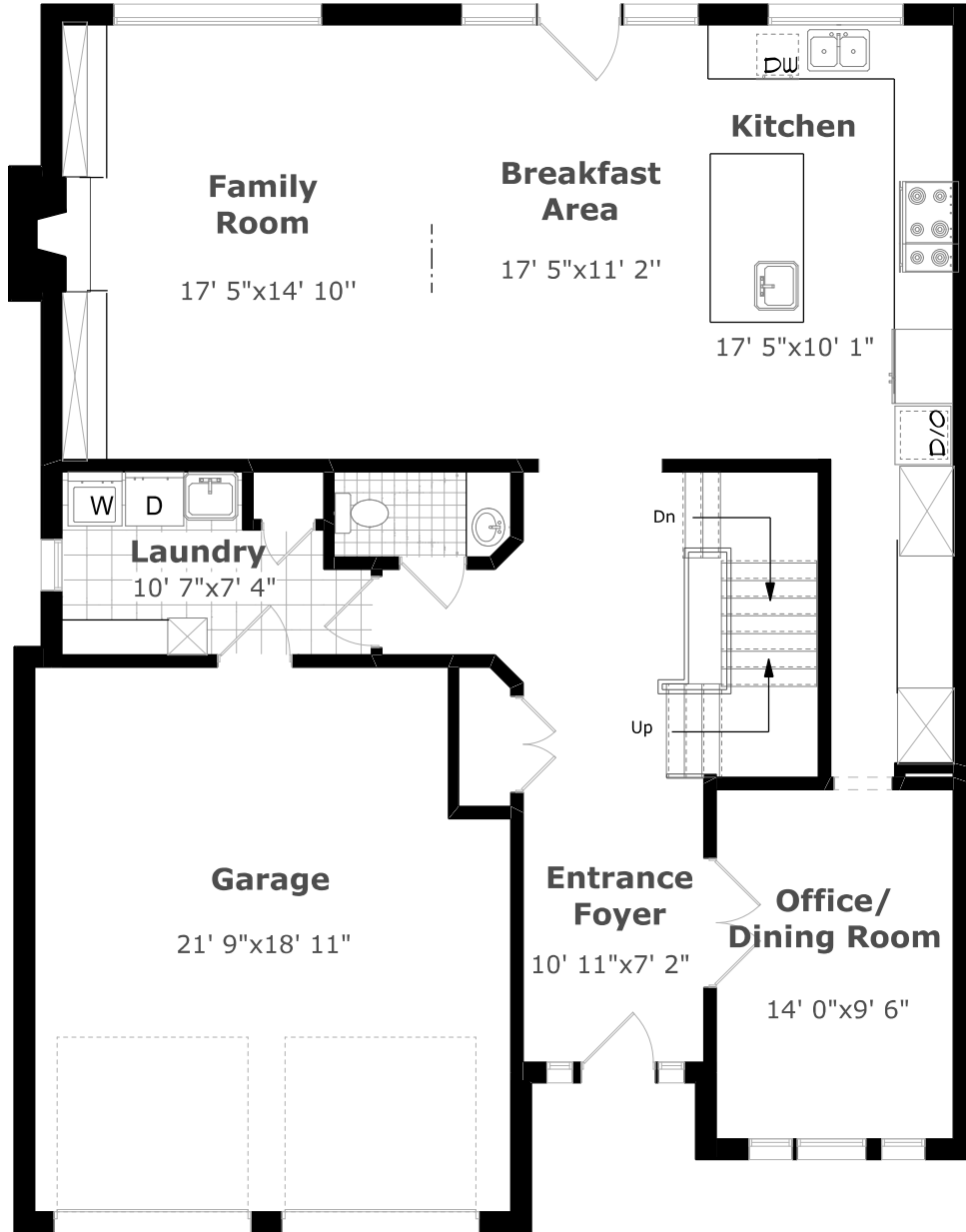


434 Reynolds Street



May 2021



Main Floor Plan

1,354.1 sq. ft. +

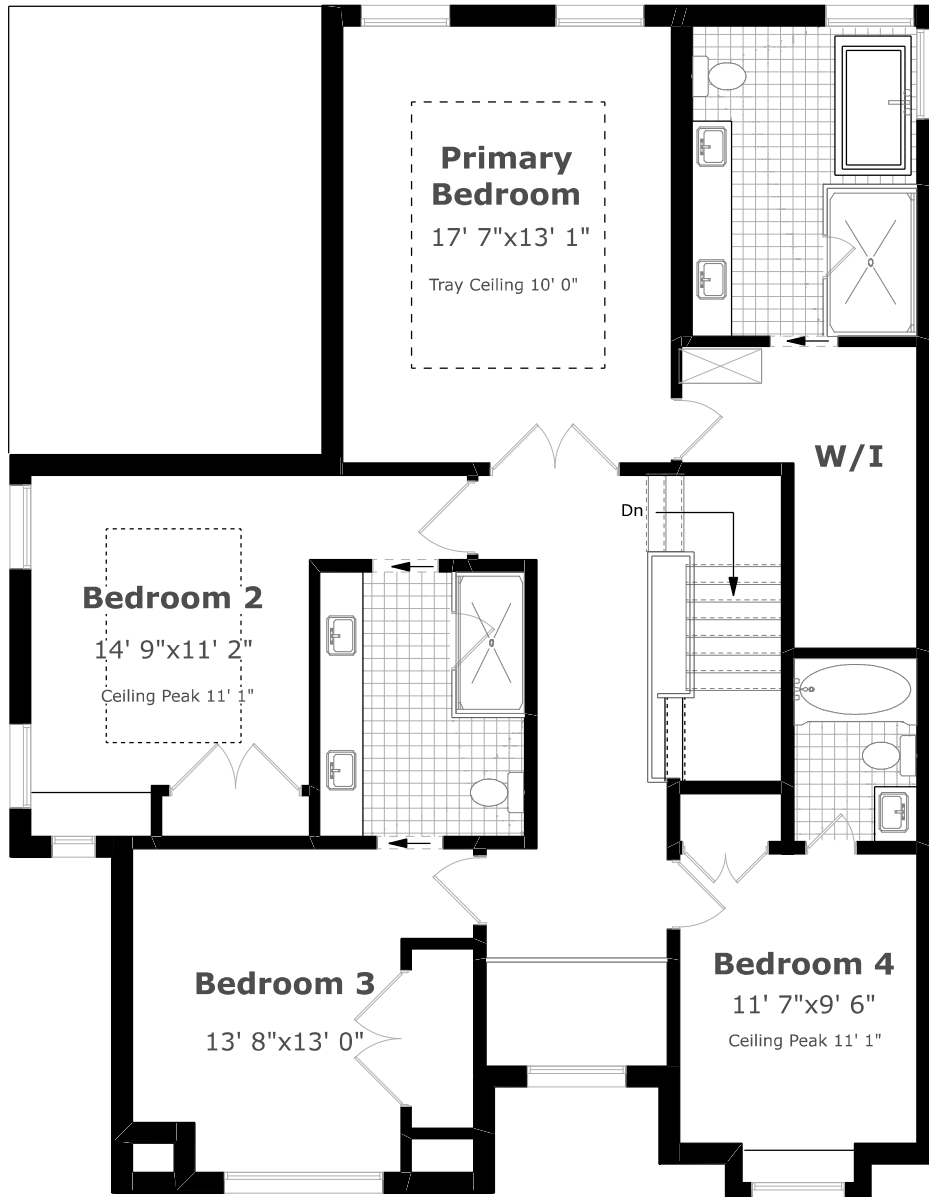
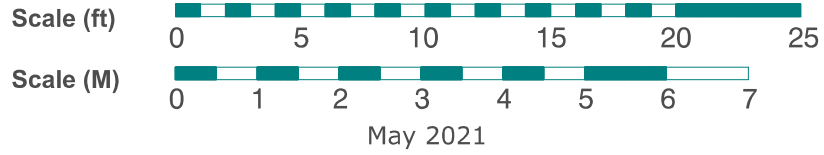
442.1 sq. ft. (Garage)

9'-0" Ceiling



Measurements may not be 100% accurate. Floor Plans provided for illustrative purposes only. Room sizes not used to calculate area.

434 Reynolds Street



2nd Floor Plan

1,455.8 sq. ft.

9' 0" Ceiling



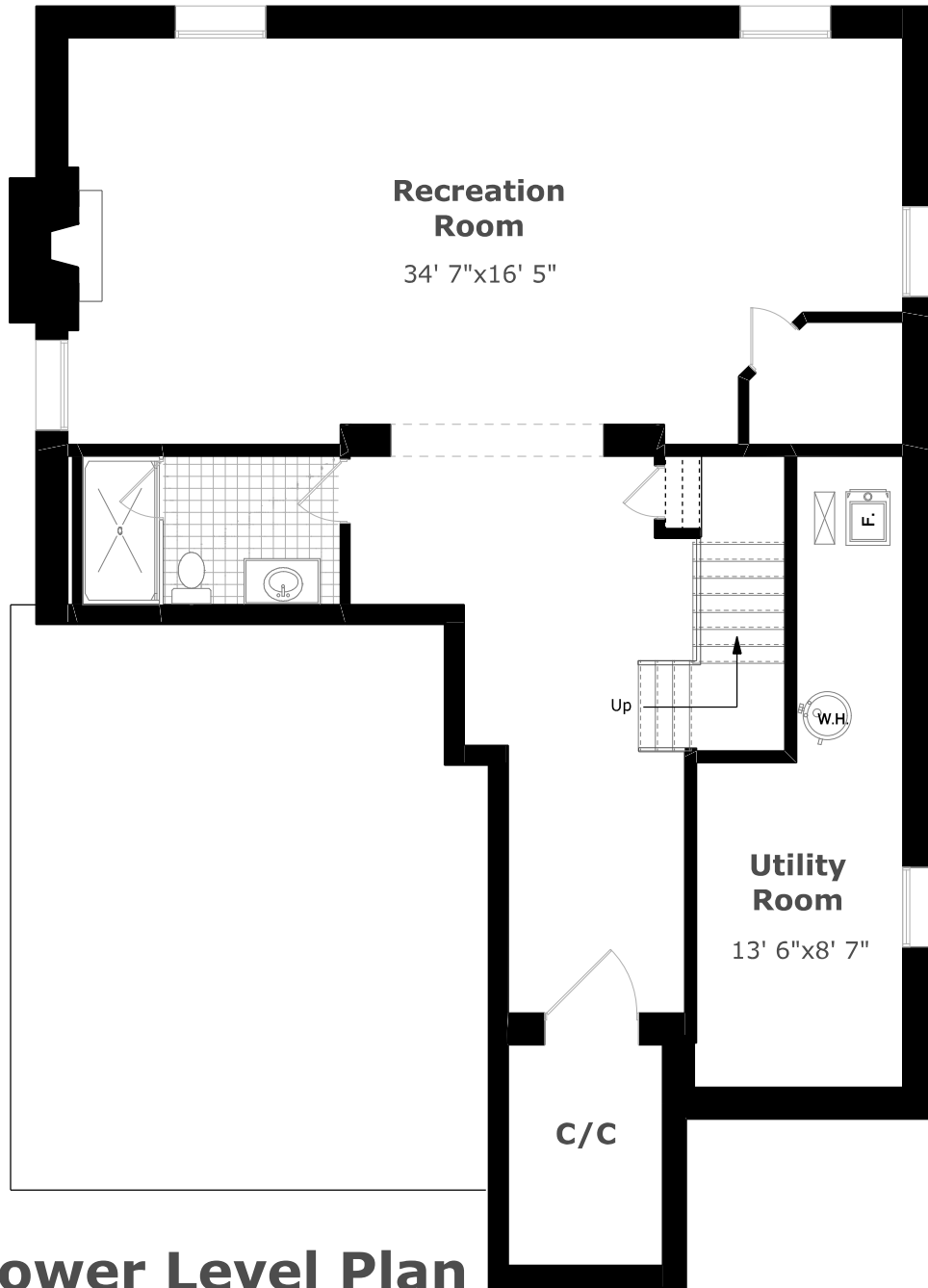
Measurements may not be 100% accurate. Floor Plans provided for illustrative purposes only. Room sizes not used to calculate area.

434 Reynolds Street

Scale (ft) 0 5 10 15 20 25

Scale (M) 0 1 2 3 4 5 6 7

May 2021



Lower Level Plan

1,415.2 sq. ft.



Measurements may not be 100% accurate. Floor Plans provided for illustrative purposes only. Room sizes not used to calculate area.